



2 Seas Mers Zeeën

ISE

European Regional Development Fund



www.iseproject.eu

#ISE2Seas

Visit to the Factory of the Future Application Labs

ISE MECHATRONICS CLUSTER EVENT

KORTRIJK - 6/3/2020

The very near future brings new developments that will have a huge impact on how we do business and the way we organise our production. AR/VR, cobots, Smart applications, IoT, etc... will all have a massive impact on our industry. How can you find opportunities in new technologies instead of threats? The 'Factory of the future' from POM West-Flanders has installed various application labs to give companies a taste of the possibilities. As a partner in the ISE project, POM will host the members of the cluster in three of their application labs.



Kamer van
Koophandel
West-Vlaanderen



Kamer van
Koophandel
Oost-Vlaanderen



maakt werk van West-Vlaanderen



KENT INVICTA
CHAMBER OF COMMERCE



INNOVATIEHUIS



aditec
Pas-de-Calais
Centre Européen d'Innovation et d'Innovation

This programme can be offered free of charge to cluster members of the EU subsidised Interreg-project ISE2seas and is subject to the state-aid Deminimis rules.

ISE Programme:

6 March 2020

12h - 13h30

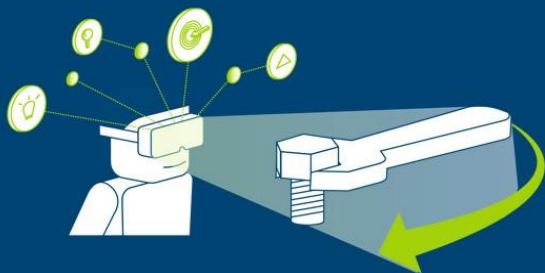
Cluster meeting lunch

Present your company to the other members of the ISE cluster

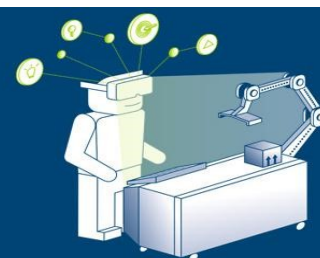
13h30 - 17h30

Guided visit by experts to three application labs

AR / VR
LAB



SMART
ASSEMBLY LAB



SMART
PRODUCTION LAB



17h30 : End of programme

For more information contact you local ISE partner:

UK : Natasha White

T: +44(0) 3000 421053

E: natasha.white@kent.gov.uk

WVL : Christ Defoszé

T: +32(0) 468 17 10 75

E: christ.defosze@pomwvl.be

OVL : Els Delaere

T: +32(0) 497 52 28 13

E: els.delaere@voka.be

NL : Denise Van Eekeren

T: +31(0) 6 441 99 144

E: dve@innovatiehuis.nl

F : Karim Neghli

T: +33(0) 7 77 03 28 73

E: kneghli@aditec.org

The EU-funded ISE project helps businesses from the UK, France, Belgium and the Netherland with innovation & internationalisation and connects them to new contacts in other areas. ISE is part-financed by the Interreg 5A 2 Seas Programme through the European Regional Development Fund. Supported by

